



## introducing a biomechanical breakthrough in prosthetic "sockets" for upper and lower extremity patients

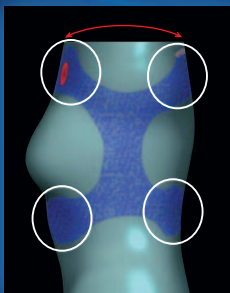
Introducing the revolutionary **High Fidelity Interface** - available only at **biodesigns**. Our design is so biomechanically advanced we don't even consider it a socket. In fact, it's hard to recognize it as such. Our patent-pending upper and lower extremity interfaces will provide you with increased stability, comfort, range of motion and tactile feedback while taking you to new levels of prosthetic performance. Whether you are a first time patient or have been frustrated with your results in the past, **biodesigns** will take you where others simply cannot.

**biodesigns**, located in Southern California, is an innovative and technologically-driven prosthetic company specializing in comprehensive patient care and rehabilitation. Our proprietary clinical approach utilizes state-of-the-art technology, including high tech laser scanners, superior clinical techniques, and the most biomechanically advanced prosthetic interface designs available.

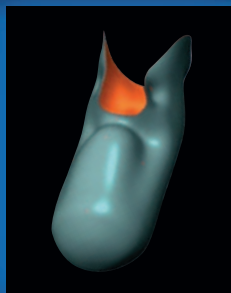
**biodesigns** works with all levels of patients, but especially caters to highly active individuals who demand more from their prostheses. Ask us also about our other high-performance upper extremity interface designs, the XFrame and ACCI, as well as the Touch Bionics i-LIMB™ Hand, with its five individually powered fingers.



©2008 biodesigns, inc.



XFrame



ACCI



iLIMB™ Hand

Find out if you are a  
candidate for this  
revolutionary upper  
and lower extremity  
interface design

Call us toll free at 888-683-9778 to schedule a clinical  
evaluation or email us at [info@biodesigns.com](mailto:info@biodesigns.com)